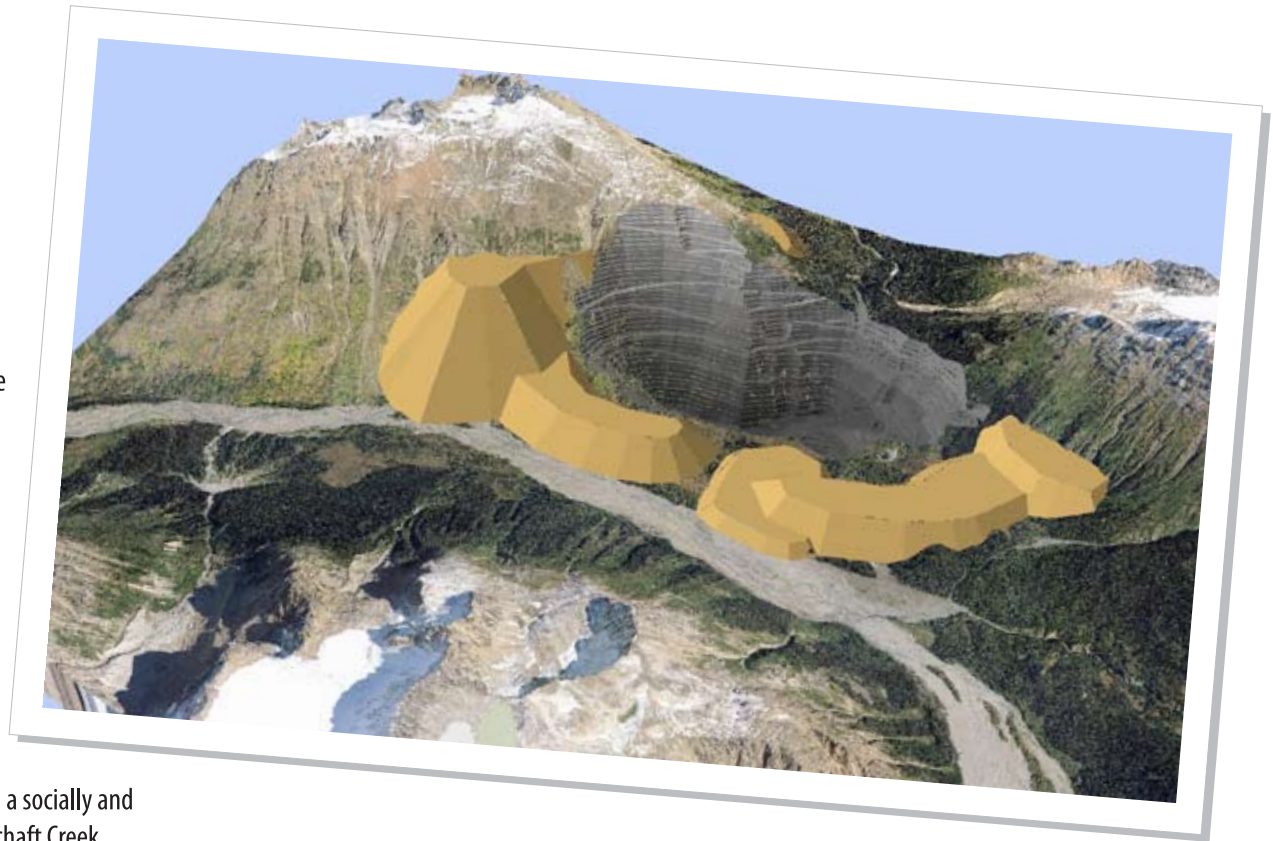


# Schaft Creek Project Description

- Copper, Gold, Molybdenum and Silver deposit
- Open pit mine on southwest side of Mt. Lacasse
- 65,000 tonnes per day (potential for more)
- 30+ Year Mine Life
- 80 km west of Bob Quinn
- 76 km west of Stewart-Cassiar Highway (Highway 37)
- Project is within the Mess Creek Valley
- Project requires BC and Federal Environmental Assessment Certificate
- Approximately 1,000 jobs during construction
- Approximately 500 permanent jobs during operations
- On site mill, tailings facility, camp, airstrip
- Project Alternatives: Tailings and the Mess Creek access road route



## About Copper Fox

Copper Fox Metals is committed to developing the Schaft Creek deposit in a socially and environmentally responsible way. The copper gold porphyry deposit at Schaft Creek represents over 7.71 billion pounds of copper, 8.1 million ounces of gold, 69.4 million ounces of silver and 584 million pounds of molybdenum. Copper Fox is committed to being an open and honest development partner by working with stakeholders, communities and the Tahltan Central Council.